

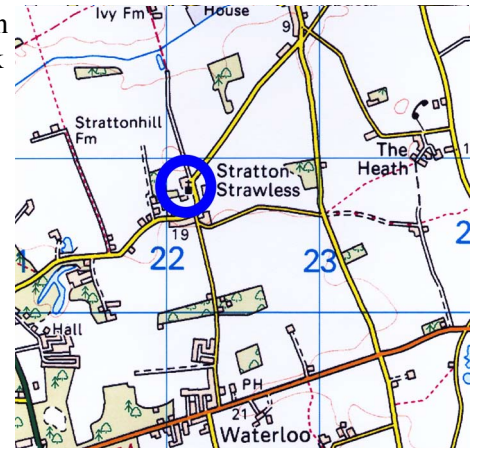
St Margaret, Stratton Strawless - www.norfolkstainedglass.co.uk



Visiting : The Church is normally open during daylight hours, but, please check before making a special visit at www.norwich.anglican.org or www.achurchnearyou.com

Address : St Margaret, Church Road, Stratton Strawless, Norfolk, NR10 5LN

Further information see: www.robertmarsham.co.uk



General Information

This medieval church is noted for its monuments of the Marsham family of particular note are those commemorating Henry & Thomas Marsham. Both date from the 17th century. Of more interest to us is the fact that in 1473 the ir ancestor, John Marsham, gave a legacy to St Margaret's to fund the glazing of a north window. Today, two of the north windows retain their medieval glazing in the tracery raising the possibility

East Window



The window which dates from c1960 contains a figure of the Virgin Mary holding Christ together with a crowned roundel. It is attributed to A L Wilkinson who worked for G King & Son

from the 15th century whilst other pieces are enamel painted pictures clearly dating from a later period

North Aisle window 1

The 15th century glass in this



window portrays the four Evangelists, all seated and winged. On the left is St Mark with his symbol of the winged lion, next to him St Matthew has lost his symbol (the divine man), we then see Luke with a winged ox and on the right St John is clearly distinguished by the eagle. Of particular note is the fact that Luke is depicted as an artist which stems from a legend that he painted the Virgin Mary.

The roundel in the main lights depicts a beautiful angel's head made in the 15th century by a member of the flourishing Norwich School.

North Aisle Window 2



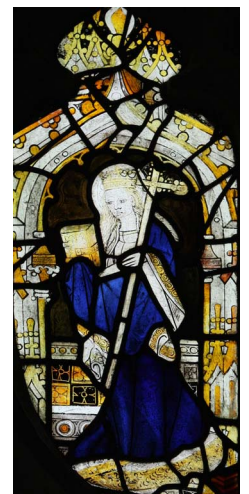
The design of the 15th century glass in this window is harsher than that in the other North Aisle window suggesting it is the later of the two windows and is therefore more likely to have been linked with John Marsham's bequest.

South Aisle Windows

All three windows contain fragments of various ages set in clear glass. Some of the glass dates



The left two tracery lights depict St Catherine and St Margaret, the centre two show the Coronation of the Virgin whilst the two right panels illustrate an Annunciation scene.



Norwich Historic Church Trust preserves our Medieval Church Heritage for future generations. Visit: www.norwichchurches.co.uk